

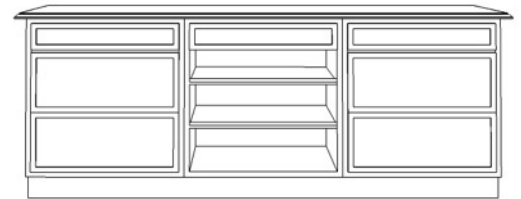
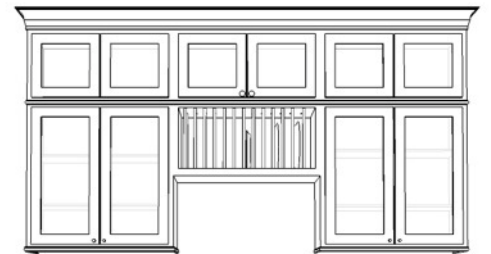
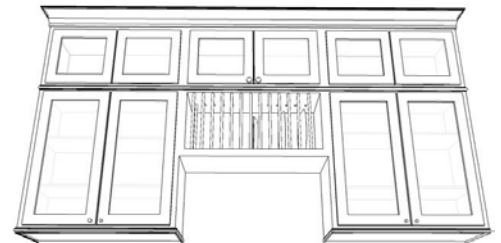
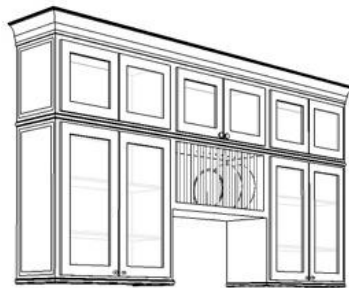
STACKED WALL CABINETS

This design incorporates several different storage options, and also shows another way of handling the layout of wall cabinets. They use a combination of smaller wall cabinets for the top to create the look of custom cabinets. For the bottom, while it is hard to see in the design picture, they actually took off the doors of the base cabinet and added pull out shelves to break up the look of having a wall of all base cabinets. One additional feature that we didn't add to our design is the cup holders below the plate rack. This is something that can easily be added if you want to complete the look from the picture.



Supplies You Will Need from the RTA Cabinet Store

- ✓ Three 30" wide x 15" high wall cabinets or 30" x 12" depending on how high you are going on the ceiling
- ✓ Two 30" wide x 24" high wall cabinets
- ✓ One plate rack
- ✓ Two 30" drawer base cabinets
- ✓ One 30" base cabinet (Note: Some of the cabinet lines have a stile down the middle of the base cabinet, depending on cabinet style/color. In the case where there is a stile, you will have to modify the cabinet by cutting it out.)
- ✓ Two pieces of light rail
- ✓ Two pieces of crown moulding
- ✓ 1 pint of stain for touchup
- ✓ Optional: pull out shelf unit



Instructions to Build Stacked Wall Cabinets

Step 1: Install the 3024 wall cabinets and plate rack, lining up the tops of the cabinets.

Step 2: Install the three 3012 or 3015 wall cabinets above the other wall cabinets (secure the cabinets to both the wall and the wall cabinets below them).

Step 3: Install the base cabinets.

Step 4: Install the light rail on the bottom of the two 3024 wall cabinets, and across the front of the plate rack.

Step 5: Install the crown moulding.

Step 6: Install the toe kick.

Optional Steps:

Step 7: Remove the doors on the middle base cabinet and if needed, cut out the center stile between the doors. Install the pull out shelves, and touch up any holes with the stain.

Step 8: If you want the cabinets to look exactly like the design, you will have to create mullion doors. Unfortunately, for that size wall cabinet we do not offer a standard mullion door. To create the same look, you will have to use a router to route out the center panel of the door. While this sounds complicated, it is fairly easy with the right tools. Once the panel is routed out, you can purchase glass inserts and complete the look that is displayed in the design picture.

Step 9: Install toe kick.

My Design Notes