



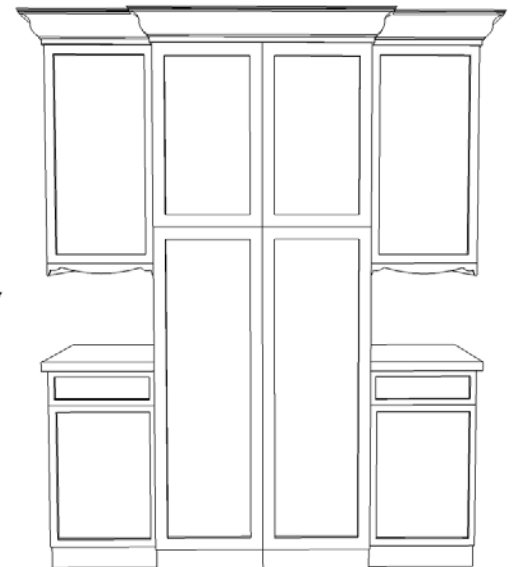
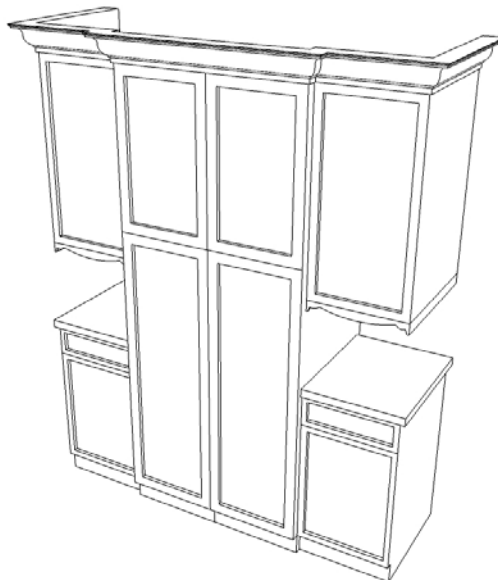
# PANTRY WALL

This design is great for smaller kitchen and tight spaces, where storage is needed, but standard base cabinets are too deep. At first glance this would look like ordinary base cabinets, but they are actually wall cabinets used to create the pantry and the base cabinets. By using wall cabinets, it frees up 12" of clearance for walking. By adding some decorative accents, it also gives the illusion that this could even be a piece of furniture.

Note: Our design is based on the remainder of the wall cabinets in the room being placed at a height of 84" on the top.

## Supplies You Will Need from the RTA Cabinet Store

- ✓ One dishwasher end panel
- ✓ Two 30" wide x 42" high wall cabinets
- ✓ Four 15" wide x 30" high wall cabinets
- ✓ One piece of 7' light rail
- ✓ Two pieces of crown molding
- ✓ Two straight valances
- ✓ Either decorative furniture feet, or one 8' piece of toe kick (depending on how you finish the bottom)
- ✓ Three 2 x 4 pieces of lumber (depending on step #1)
- ✓ Optional – Four 30" decorative doors



# Instructions to Build a Pantry Wall

- Step 1: The first step before getting started is to determine how you want to finish off the bottom. If you want to create the illusion of toe kick and make it look like a base cabinet, you will have to build a frame to rest the cabinets on. If you want it to look more like furniture by using decorative furniture feet, you won't need the frame (for our example, we will be using furniture feet).
- Step 2: Using the height of the furniture feet as a guideline, measure on the wall and mark where the bottom of the cabinets will begin. Once you have that height, cut the 2 x 4's to 84" in length. These will be used to bring the center cabinets out from the wall and give the illusion of depth to the pantry. Once cut, attach the 2 x 4's to the wall, lining them up with the two outside edges of where the cabinets will go and one in the middle.
- Step 3: Take two of the furniture legs and secure them to the bottom of one of the 30" wide x 42" wall cabinets.
- Step 4: Once the 2x4's are attached to the wall, secure the two 30" wide x 42" high wall cabinets to the 2 x 4's.
- Step 5: Take the remaining furniture feet, and attach them to the outside edges of the bottom of the 15" wide wall cabinets that will be installed next to the center stack.
- Step 6: Using the previous mark at the bottom of the cabinets, line up the two bottom 15" wide x 30" high cabinets and secure them to the wall and the adjacent wall cabinets.
- Step 6: Once the bottom ones are installed, figure out how high you want the upper 15" wide cabinets and secure them to the wall.
- Step 7: Install countertops.
- Step 8: Take the two straight valances and cut them to fit between the countertop and the bottom of the upper cabinets. These will be used to cover up the exposed 2 x 4 that was used to secure the wall cabinets to and that created the depth on the center cabinets.
- Step 9: Install the crown molding on top, and the light rail under the wall cabinets.

## My Design Notes